

**Function control**

**D2 Voltage control**

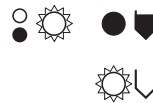
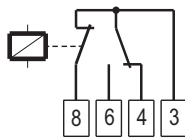
This option monitored: **Cable break and Voltage failure**

**Symbol signification**

- = under voltage
- = LED "OFF"
- ◡ = full
- ∩ = empty
- = LED "OFF"
- ☀ = LED "ON"
- ◻ = Relay actuated
- ◻ = Relay without current

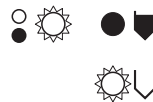
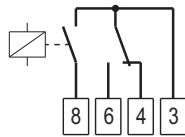
**Switching logics and function displays**

**Faultless condition**



During of the whole undisturbed process is the defect report relay activated and signalled by the expense of the control voltage at the clamp 8 for the accurate process of the device.

001-AP21

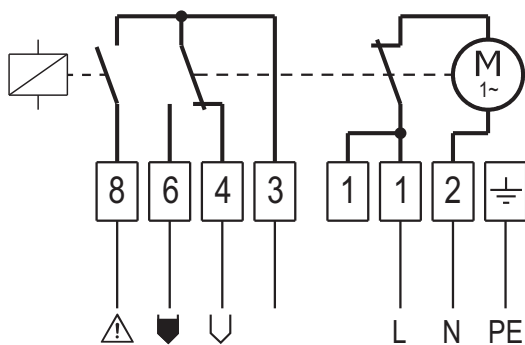


**Device error displayed**

By cable break or voltage failure the relay drops out an breaks the circuit to the clamp 8 and signaled a mistake.

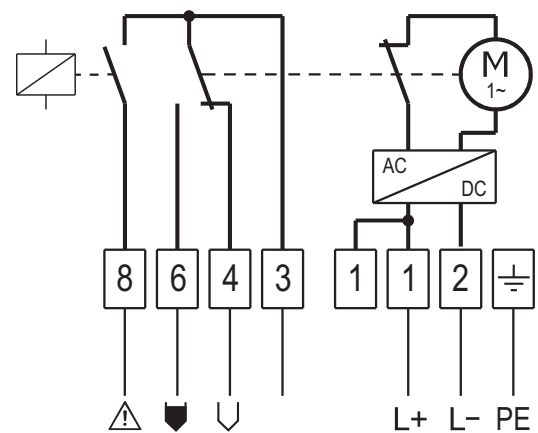
001-AP24

**Circuit diagram AC with delay D2**



001-AP01

**Circuit diagram DC with delay D2**



001-AP00

**Please take notice!!**

By the start up of the level indicator the defect report relay as far as approx 0.3 sec delayed on.

**Device is in idle mode. Faultless condition!!!**

**ATTENTION!** Level indicator is always to be brought into circuit so that no undesirable switching function can occur in the case of mains voltage failure.