

# Rotary blade level indicator



DF

# Rotary blade level indicator

## ...MOLLET-DF-series.....

The maintenance free level limit switches in the **DF** series can be used as **full, empty and demand indicator** and they guarantee an absolute reliability and safe function even under extreme and the most difficult conditions.

They are observing the filling level in silos, containers, weighers, discharge pipes etc. and they are excellently qualified for use in dusty, powdery and granulated bulk materials as well as in sludges and pastes.

They are versatile and universal usable because of their wide range of type varieties, their plenty of accessories and their extensive ATEX certifications.

Simple and low-cost mounting.

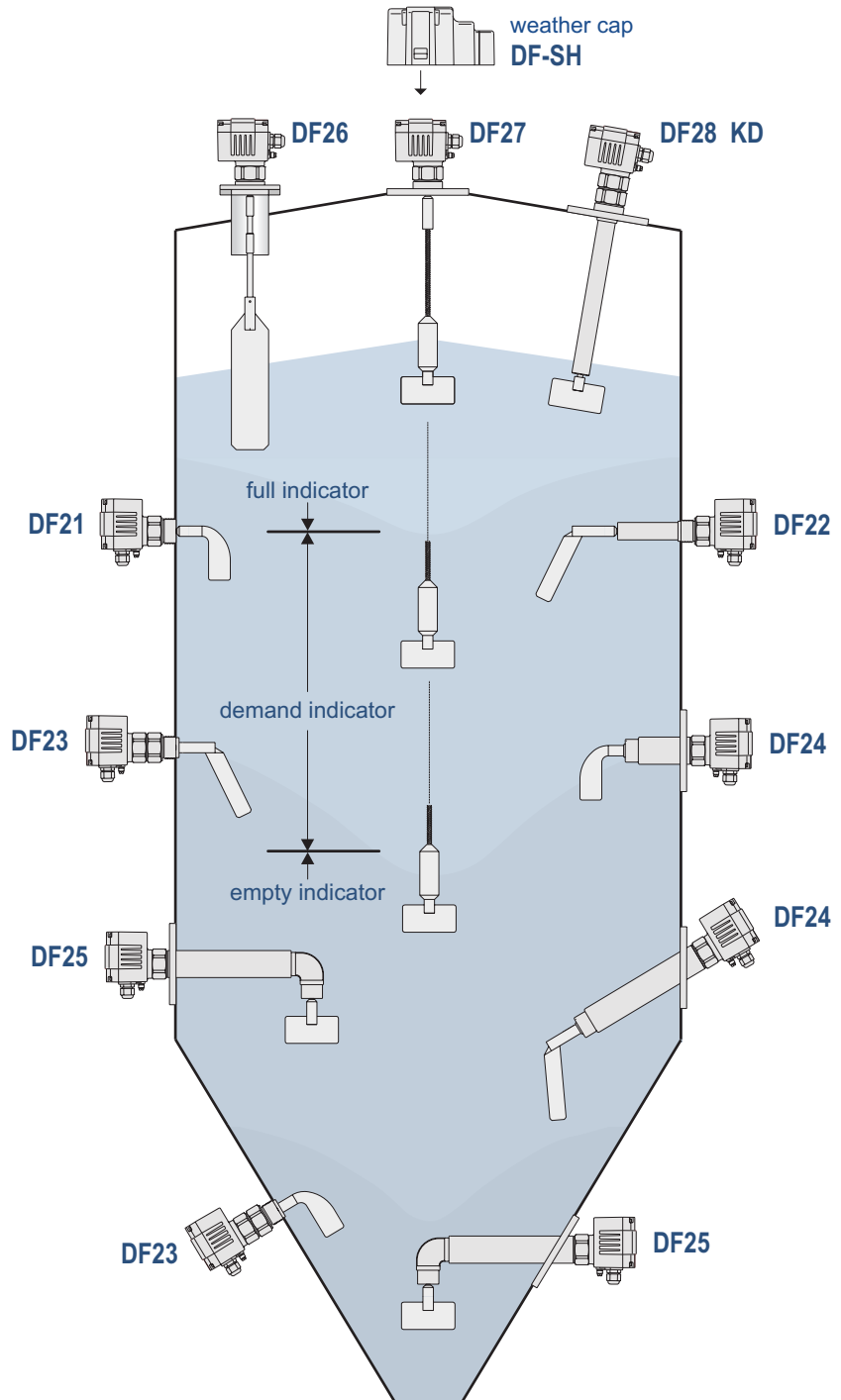
Reliable function even by dust accumulation, adherence of bulk goods, electrostatic charge, temperature and pressure.

The **DF** rotary blade level indicators are certificated for use in all potentially explosive dust and gas atmospheres as well as in hybride mixtures.

## ...ATEX-Options.....

### Ex types of protection

- ⚡ II 1D Ex ta IIIC T70°C
- ⚡ II 1/2D Ex ta/tb IIIC T80°C
- ⚡ II 1/3D Ex ta/tc IIIB T80°C
  
- ⚡ II 2G Ex db eb IIC T6
- ⚡ II 1G c IIC TX/II 2G Ex db eb IIC T6



# Rotary blade level indicator

## Technical data

## DF21

<b>Shaft and protecting tube (jib)</b>	stainless steel 304, optional 316Ti (rope shaft 316)
<b>Measuring blade</b>	stainless steel 304, optional 316Ti
<b>Supply voltages</b>	220 ... 240 V, 110 ... 120 V, 48 V, 24 V AC 12 V, 24 V and 48 V DC
<b>Signal contact, potentialfree as standard</b>	1 mA 4 V up to 2 A 240 V AC gold contacts
<b>Ambient temperature</b>	-20 °C ≤ Ta ≤ +70 °C optional -35 °C or -40 °C
<b>Bulk temperature</b>	-40 °C ≤ Ta ≤ +800 °C up to +1000 °C on demand
<b>Process pressure</b>	<ul style="list-style-type: none"><li>▶ -0,9 bar ... 10 bar</li><li>▶ -0,9 bar ... 10 bar with pressure decoupling bell housing for ATEX areas</li><li>▶ -0,9 bar ... 25 bar with area separating element (absolutly tight)</li></ul>
<b>Type of protection</b>	IP66
<b>Process connections</b>	aluminium, stainless steel 304 or 316Ti G¾, G1, G1¼, G1½, G2, M30, M32 F70, F100, DN32, DN100 various types
<b>Sensitivity</b>	adjustable, depending on the bulk goods characteristics
<b>Self-monitoring (option)</b>	<ul style="list-style-type: none"><li>▶ function control</li><li>▶ function control with pulsating „all-right-signal“</li><li>▶ voltage monitoring</li></ul>
<b>Shaft bearing</b>	encapsulated ball bearing, optional of stainless steel
<b>Shaft sealing</b>	additional shaft sealing ring chooseable of NBR, NBR white (FDA conform), PTFE or special sealing ring PTFE/VITON

- ▶ wide range of application
- ▶ for any mounting position



## DF22

- ▶ with extended process connection
- ▶ wide range of application
- ▶ for any mounting position



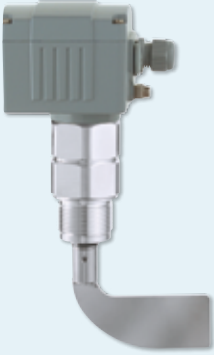
- ▶ with vibration dampening



# Rotary blade level indicator

## DF23

- ▶ with reinforced blade shaft
- ▶ for any mounting position



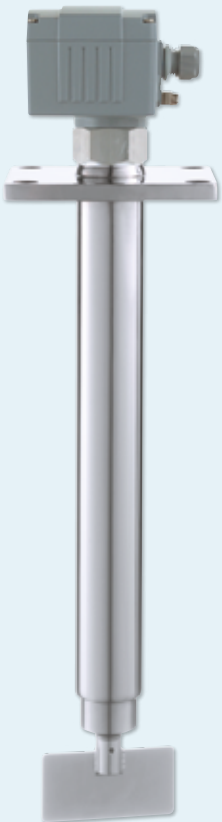
## DF25

- ▶ with angled jib
- ▶ for horizontal mounting position



## DF24

- ▶ reinforced blade shaft with long jib
- ▶ for any mounting position



## DF26

- ▶ Pendulum shaft up to 1.5 m length
- ▶ for vertical mounting position



## DF27

- ▶ Rope shaft up to 10 m length
- ▶ for vertical mounting position



# Rotary blade level indicator

## DF28

- ▶ with protecting tube up to 6 m length
- ▶ for vertical mounting position
- ▶ with built-in-bearing "KD" for any mounting position



## DF29

- ▶ with protecting cage up to 6 m length
- ▶ for vertical mounting position



## DF30

- ▶ for installation in the taper closure of bellow feeders



## DF31

- ▶ with angular rotating measuring blade
- ▶ for any mounting position



## DF33

- ▶ with angular rotating measuring blade
- ▶ for any mounting position



# Rotary blade level indicator

## Accessories

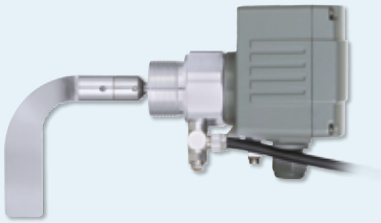
- ▶ Temperature decoupling bell housing



- ▶ Pressure decoupling bell housing for container pressure -0,9 bar ... 10 bar
- ▶ Area separating element gas and dust proof up to 25 bar



- ▶ Overpressure enclosure und annular gap flushing



- ▶ Zone separating element – separates Zone 0 from Zone 1



## Quick couplings

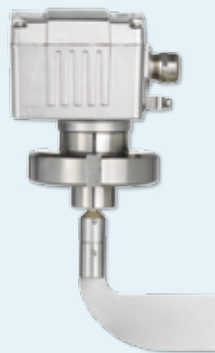
- ▶ "Storz"-coupling



- ▶ KAMLOK-coupling



- ▶ Food industry-coupling



- ▶ Clamp coupling



# Rotary blade level indicator

## ..... Housing varieties .....

### Four housings are available

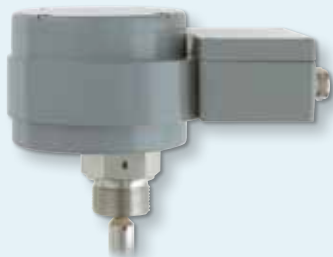
- ▶ **A1** aluminium pressure casting, RAL 7001 coated standard design, type of protection: IP66



- ▶ **A2** housing in stainless steel 316Ti hygienic type, type of protection: IP66



- ▶ **A3** EEx housing in aluminium type of protection: IP66



- ▶ **A4** EEx housing in stainless steel 316Ti hygienic type, type of protection: IP66



### for housing A1 and A2

- ▶ with function display (on, full, empty, malfunction)



- ▶ with signal lamp (full or empty)



- ▶ with large signal lamp (full or empty)

