

# Hose couplings



KEIN

# Hose couplings

## K

For signaling at the couplings of silos or tanks and to signal at coupling stations.

During the coupling of the counter coupling or hose coupling, the limit switch will be actuated. Blank caps don't activate the limit switch. The coupling with internal thread has a built-in limit switch with metal housing. The robust metal housing and the design are preventing a damage of the switch while handling with spanner for couplings or any other tools.

**Suitable for all industrial fields.**

**Cable length** 2 m, 5 m and 10 m


## K.SZ

► Quick couplings system „Storz“




## Variations of switches



### KE limit switch with mechanical contact

**Switching function** 1 NC + 1 NO  
**Capacity of the contact** 1,5 A / 240 V AC  
**Type of protection** IP67  
**Ambient temperature**  $-25\text{ °C} \leq T_a \leq +70\text{ °C}$   
**Ex type of protection**  II 3D Ex tc IIIC T80°C

### KI inductive proximity switch

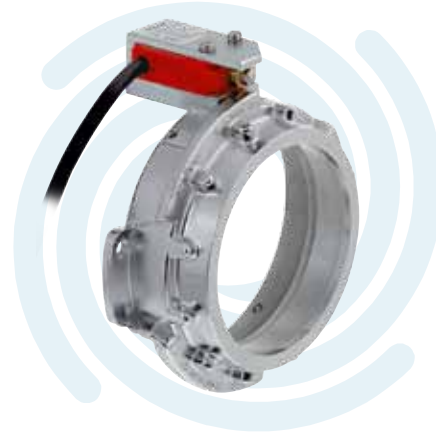
**Supply voltage** 10 ... 30 V DC  
**Switching function** PNP, normally open (NO)  
**Capacity**  $\leq 200\text{ mA}$ , constant current  
**Type of protection** IP67  
**Ambient temperature**  $-20\text{ °C} \leq T_a \leq +60\text{ °C}$   
**Ex type of protection**  II 3D Ex tD A22 IP67 T110°C

### KN inductive proximity switch NAMUR

**Supply voltage** 8 V DC  
**Switching function** normally closed (NC)  
**Type of protection** IP68  
**Ambient temperature**  $-25\text{ °C} \leq T_a \leq +60\text{ °C}$   
**Ex type of protection**  II 2G EEx ia IIC T6  
 II 1D Ex iaD 20 T...°C

## K.VK

► Couplings for tank trailers DIN 28 450



## K.AVK

► KAMLOK couplings DIN 2828



# Hose couplings

## K.2-SZ

- ▶ Couplings with two limit switches



### for coding 1 of 2

The fixed coupling has two built-in limit switches. During the coupling of the corresponding coded counter coupling either one (code: 0 I) or two (code: I I) limit switches will be actuated.

### for coding 1 of 3

The fixed coupling has two built-in limit switches. During the coupling of the binary coded counter coupling switch 1 (code: 0 I), switch 2 (code: I 0) or both switches (code: I I) will be actuated.

## K.D-SZ

- ▶ Couplings with a double limit switch



### for coding 1 of 3

The fixed coupling has two built-in limit switches as double switches beneath. The counter coupling is binary coded in that way that either switch 1 (code: 0 I), switch 2 (code: I 0) or switch 1 and 2 (code: I I) will be actuated.

Available for the coupling size 110-A.

## K.3-SZ / K.4-SZ

- ▶ Couplings with three limit switches or four limit switches



### for coding 1 of 7 or coding 1 of 15

In the fixed coupling three or four inductive proximity limit switches are built in. During the coupling of the binary coded counter coupling or the blank cap a combination of limit switches will be actuated, that indicates which coupling (1 to 7 or 1 to 15) is attached.

Available for the coupling size 110-A.

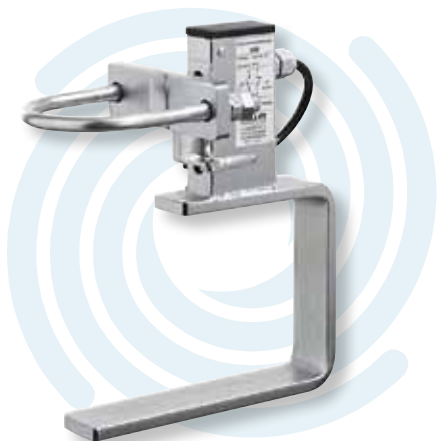
# Hose couplings

## .... Quick couplings and connections of all kind .....



We are specified in the fitting of limit switches in miscellaneous quick couplings like dry couplings of all brands, Guillemine couplings (see picture) as well as in screw connections, flange- and clipped connections.

## .... Swivelling lever with limit switch .....



Used instead of built in limit switches if robustness and security against vandalism is the point, if there is a considerable danger of contamination or if connection systems were used, on that no limit switches can mounted.

While coupling the hose coupling, the lever is swivelling beside and the limit switch will be actuated.

## .... KS-SZ .....



Blank caps and hose couplings with built in dead lock with cylinder.

To lock up the filling pipe of silos and tanks and also of coupling stations within the plants.

Locking optional with the same key for all locks or a separate key for every lock.