
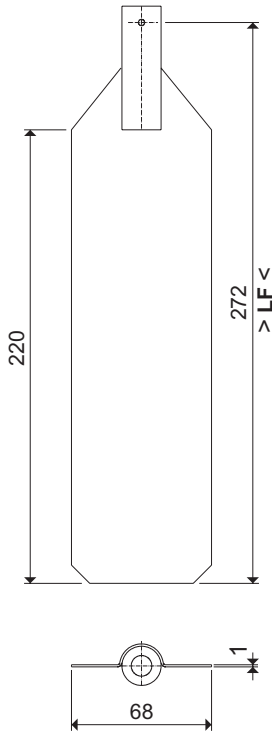


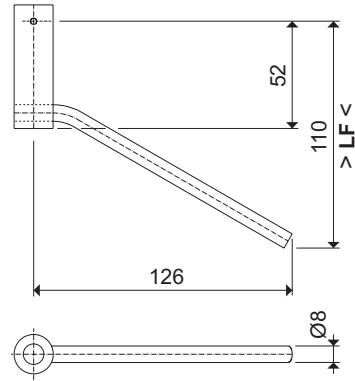
**Abmessungen der Messflügel**

Zündschutzart für alle abgebildeten Messflügel:  II 1GD c IIB TX

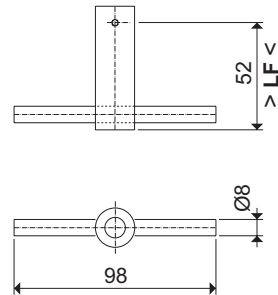
**TO Flügel**



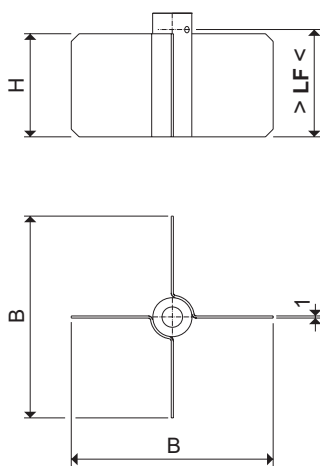
**SG Muffen-Flügel, verstärkt**



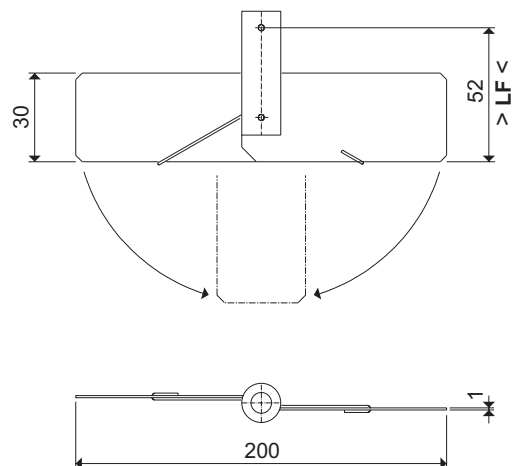
**TG Flügel, verstärkt**



**X Flügel**



**K1 Klapp-Flügel**

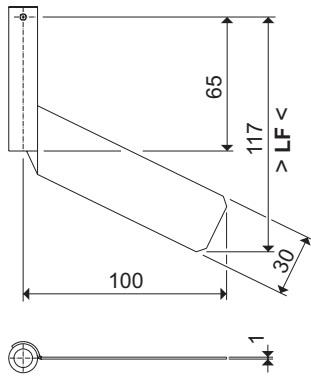


	<b>B</b>	<b>H</b>	<b>LF</b>
X1	98	50	52
X2	98	100	102
X3	180	100	102
XM	44	50	52

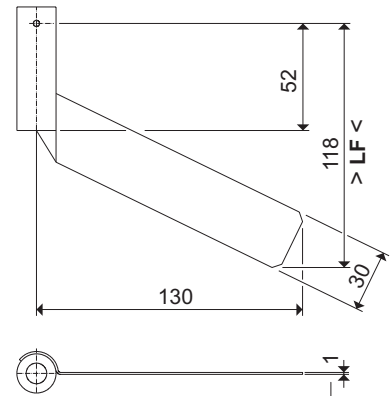
**Abmessungen der Messflügel**

Zündschutzart für alle abgebildeten Messflügel:  II 1GD c IIB TX

**S1 Muffen-Flügel**

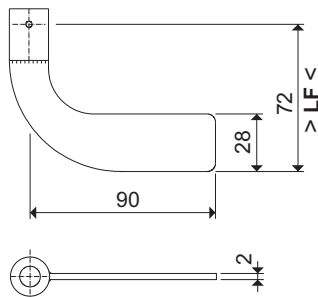


**S2 Muffen-Flügel**

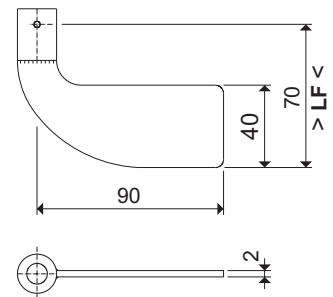


2 mm bei S2V Muffen-Flügel, verstärkt

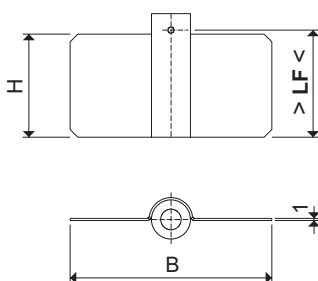
**M1V Muffen-Flügel, verstärkt**



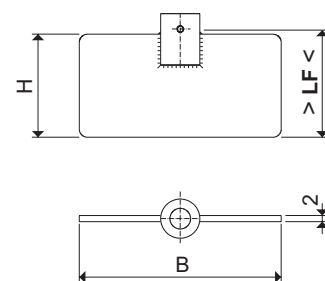
**M2V Muffen-Flügel, verstärkt**



**T - Flügel**



**T - Flügel, verstärkt**



	B	H	LF
T1	98	50	52
T2	98	100	102
T3	200	100	102
T5	250	100	102
T8 <sup>1)</sup>	250	100	102

<sup>1)</sup> Flügelblätter 10 mm dick  
 aus Gummi NBR, schwarz

	B	H	LF
T1V	98	50	52
T2V	98	100	102